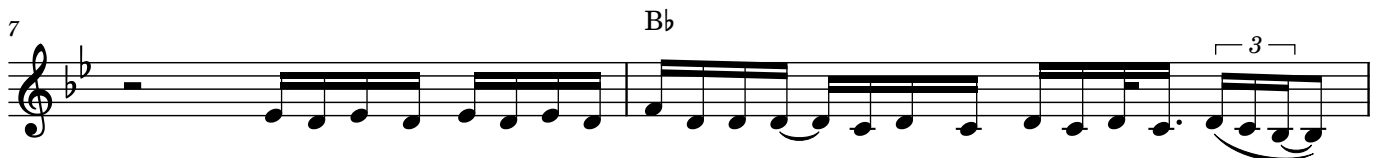
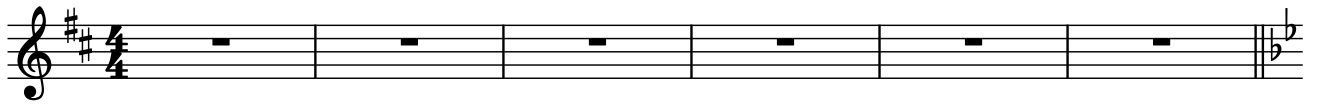


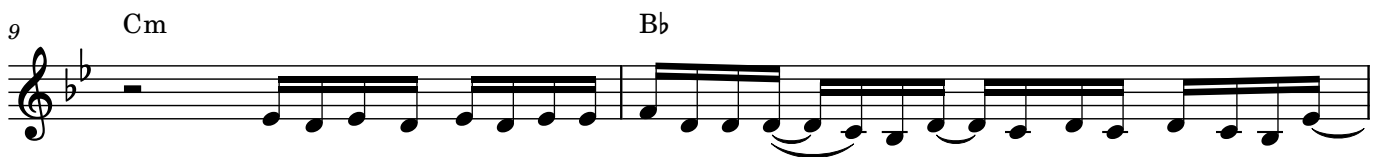
Total eclipse of the heart

Bonnie Tyler

♩ = 64 A ♩ = 64



Ev-'ry now and then I get a lit-tle bit lone - ly and you're nev-er com-in' round__



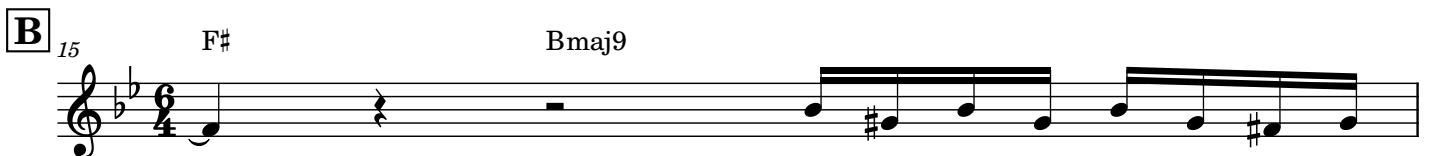
Ev-'ry now and then I get a lit tle bit tired__ of lis - tening to the sound of my tears



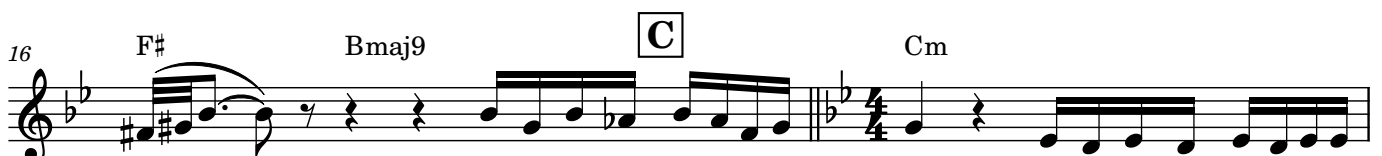
— Ev-'ry now and then I get a lit-tle bit nerv-ous that the best of all the years have gone by.



— Ev-'ry now and then I get a lit tle bit ter - ri-fied and then I see the look in your eye.



— Ev - 'ry now and then I fall a -



part_____ Ev-'ry now and then I fall a - part Ev-'ry now and then I get a



lit-tle bit rest - less and I dream of some-thin' wild__

Ev-'ry now and then I get a



lit-tle bit help-less and I'm ly-ing like a child in your arms

Ev-'ry now and then I get a

2

22 Db Eb

lit-tle bit an - gry and I know I've got to get out and cry___ Ev-'ry now and then I get a

24 Db

lit - tle bit ter - ri - fied but then I see the look in your eyes

D

25 F# Bmaj9 F# Bmaj9

Ev-'ry now and then I fall a - part___ Ev-'ry now and then I get a -

E

27 Bb Gm Eb F

part And I need you now to - night,___ and I need you more than ev -

29 Bb Gm Eb F7

- er. And if you on - ly hold me tight,___ we'll be hold - ing on___ for -

31 Bb Gm Eb³ F7

ev - er. And we'll on - ly be mak - ing it right,___ 'cos we'll nev - er be wrong To -

33 Eb/G F/A

geth - er we can take it to the end of the line.___ Your

34 Gm C/E C

love is like a shad - ow on me me of the time._____ I

35 Bb F/A

don't know what to do and I'm al - ways in the dark___ We're

36 Gm C/E C

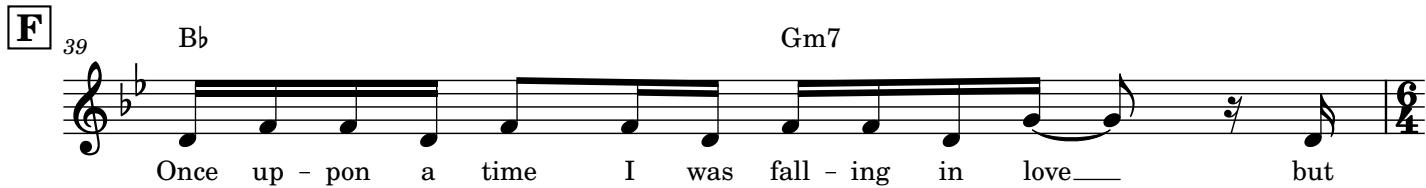
liv - ing in a pow - der keg and giv - ing off sparks___ I real ly need you to night

37 $B\flat/D$ F/C $B\flat/D$ $E\flat$ F



for ev - er's gon-na start to - night for-ev - er's gon-na start to -

F 39 $B\flat$ $Gm7$



Once up - pon a time I was fall - ing in love - but

40 D $E\flat$ $B\flat/D$ $Cm7$ $F7(b9)$



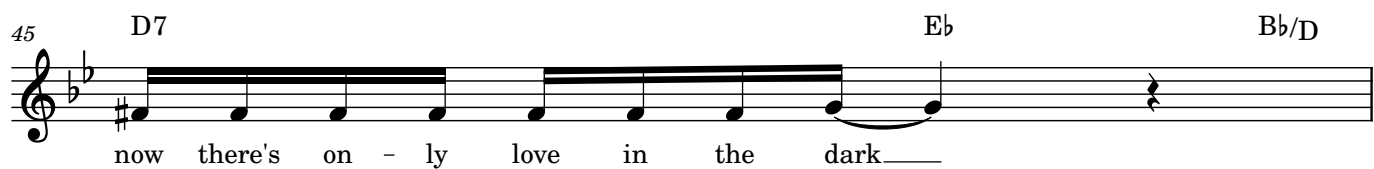
now I'm on ly fall-mg a-part. There's noth-ing I can do, a to-tal e-clipse of the heart.

42 $B\flat$ $Gm7$ $E\flat$ $F7$ $B\flat$ $Gm7$



Once up-on a time there was light in my life, - but

45 $D7$ $E\flat$ $B\flat/D$



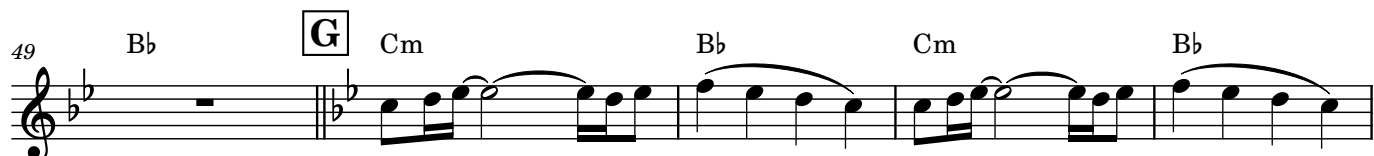
now there's on - ly love in the dark -

46 $Cm7$ $F7(b9)$ $B\flat$ Gm $E\flat$ F



Noth-ing I can say, a to-tal e-clipse of the heart -


49 $B\flat$ **G** Cm $B\flat$ Cm $B\flat$



54 $E\flat$ $D\flat$ $E\flat$ $D\flat$

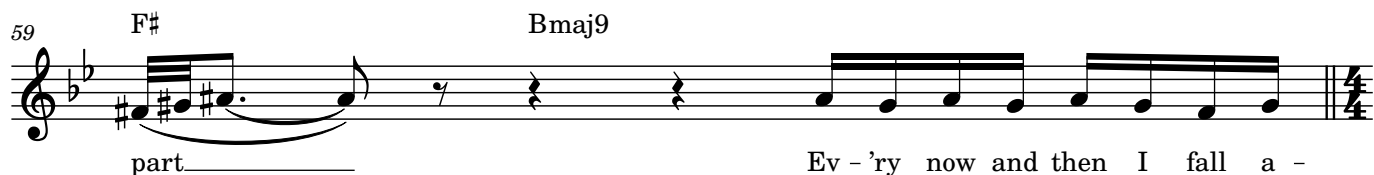


58 $F\sharp$ $Bmaj9$



Ev - 'ry now and then I fall a -

59 $F\sharp$ $Bmaj9$



part Ev - 'ry now and then I fall a -

60 **H** Cm Bb

62 Cm

63 Bb Eb

65 Db Eb

67 Db

I

68 F# Bmaj9

69 F# Bmaj9 **J** Bb Gm7

71 Eb F7 Bb Gm7

73 Eb F7 Bb Gm7

75 Eb F Eb/G F/A

77 Gm C

love is like a shad-ow on me all of the time _____ I

78 Bb F/A Gm C

don't know what to do I'm al-ways in the dark We're liv-in' in a pow-der keg and gi-vin' off sparks

80 Bb/D F/C Bb/D

I rel-ly need you to - night _____ for - ev - er's gon-na start to - night

82 Eb F **K**Bb Gm7

_____ for-ev - er's gon-na start to _____ Once u-pon a time I was fal-lin' in love

84 D7 Eb Bb/D Cm7 F7(b9)

now I'm on-ly fal-lin' a - part _____ No-thin' I can do a to-tal e-clipse of the heart

86 Bb Gm Eb F7(b9) Bb Gm7

_____ Once u-pon a time there was light in my life _____ but

89 D7 Eb Bb/D Cm7 F7(b9)

now there's on-ly love in the dark _____ No-thin' I can do a to-tal e-clipse of the heart

91 **L** Bb Gm7 Eb F7(b9) Bb Gm7 Eb F7(b9)

_____ a to-tal e-clipse of the heart _____ Turn-a-round

95 Bb Gm7 Eb F7 Bb Gm

bright eyes _____ Turn-a-round bright eyes _____ turn a-round _____

99

Oohh _____